

# Cooperative Extension Service



Smith-Lever Act of 1914

Research Translation

“To bring the University to the people”

50 States, 5 Territories, Over 3000 Counties

“To aid in diffusing among the people of the United States useful and practical information on subjects relating to agriculture and home economics, and to encourage the application of same.”

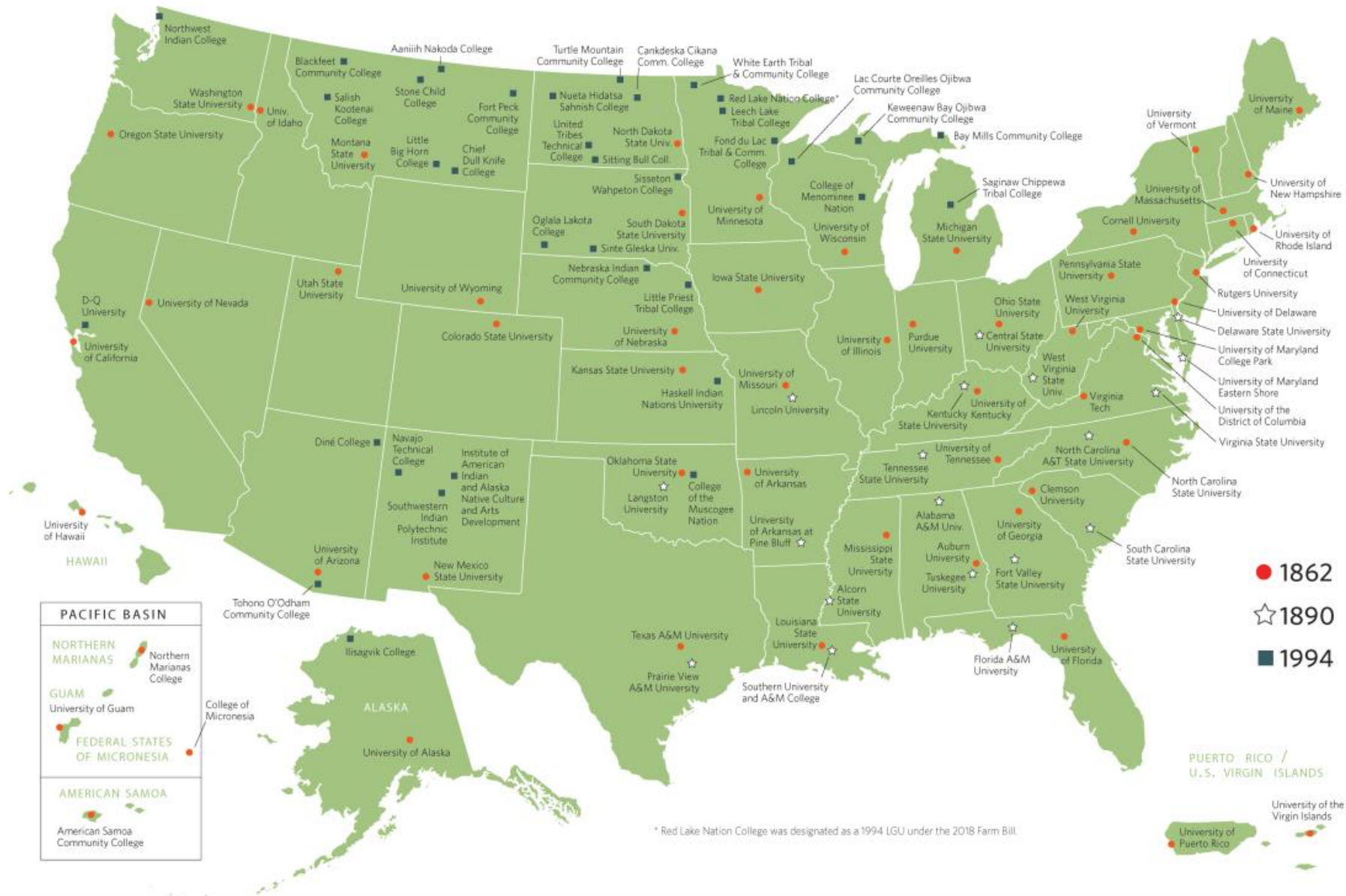


United States Department of Agriculture

National Institute of Food and Agriculture

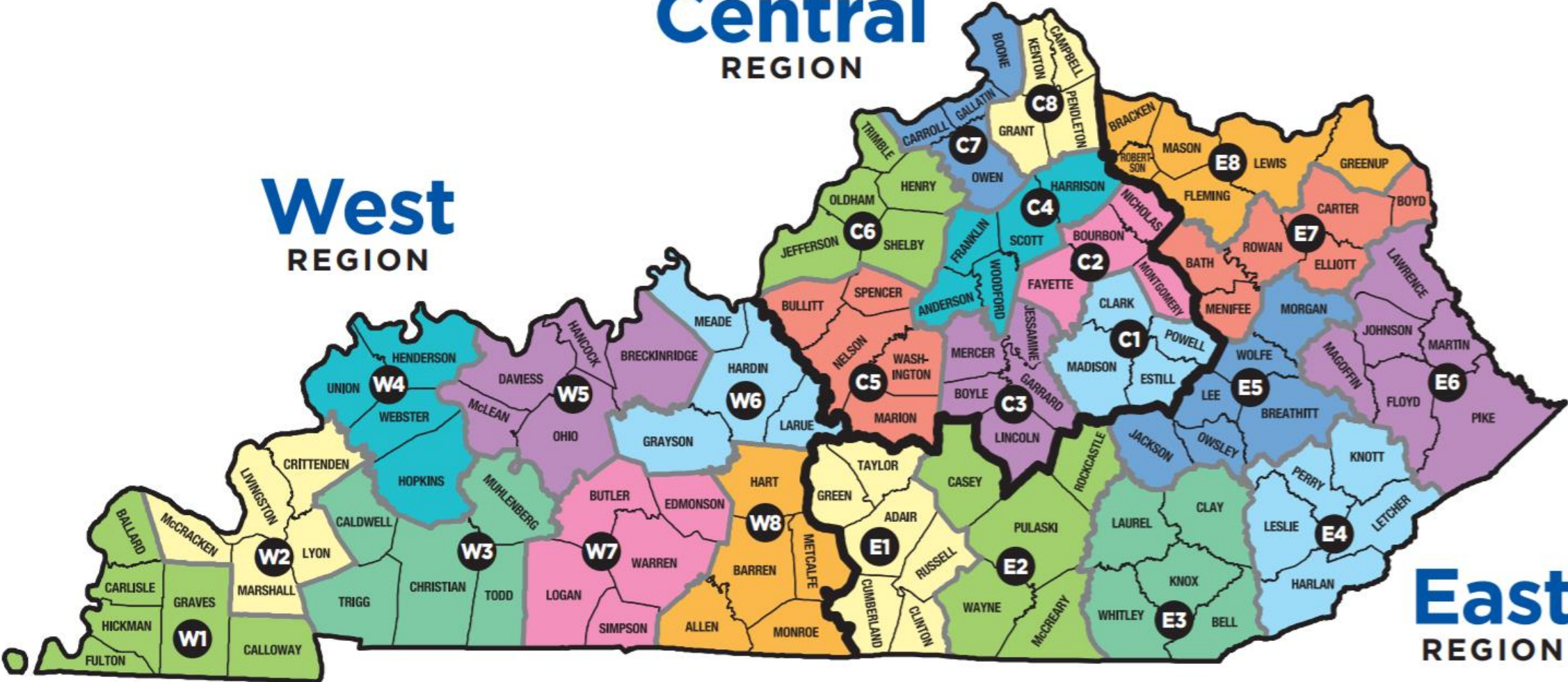
www.nifa.usda.gov @USDA\_NIFA

# NIFA LAND-GRANT COLLEGES AND UNIVERSITIES



# Central REGION

# West REGION



# East REGION



# Administration (~25)

130+ Campus-based Extension Specialists (PhD)

40+ Extension Associates (MS)

200+ County Support Staff (HS)

200+ County Program Assistants (HS)

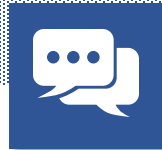
350+ County Extension Agents (BS/MS)

# Traditional Strengths of the Cooperative Extension Service



## Training

Effective  
Dissemination of  
*Evidence-based*  
Information and  
Programming



## Direct Education

County-level  
Educators  
  
*Established Trust &  
Reliability*  
  
Community Buy-in



## Subject Matter

Agriculture &  
Natural Resources  
  
Family & Consumer  
Sciences  
  
Leadership & Youth  
Development (4-H)



## Technical Support

University  
Resources & Assets  
  
Data Analysis &  
Reporting  
  
*Subject Matter  
Experts*

# What does Extension Education look like?



## In-Depth Educational Programs

Programs addressing community needs are delivered in a public setting and open to everyone.

## One-time Events

Extension staff routinely host workshops, demonstrations, and participate in field days.

## One-on-one Interactions

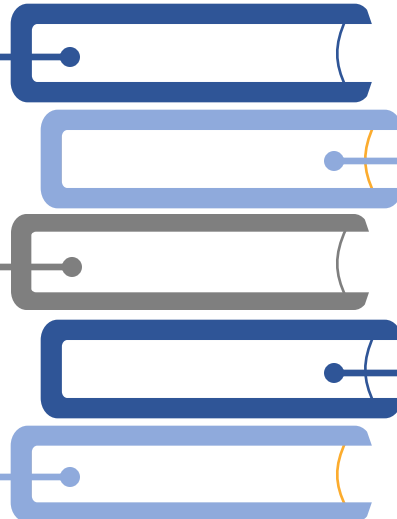
Individuals may consult with Extension staff at the office, at home, or on their farms.

## Written Extension Materials

Subject matter experts develop written materials for distribution at the county level.

## Technology

Strategies to reach people where they are include media, websites, and social media.



# Expanding Role in Health Programming

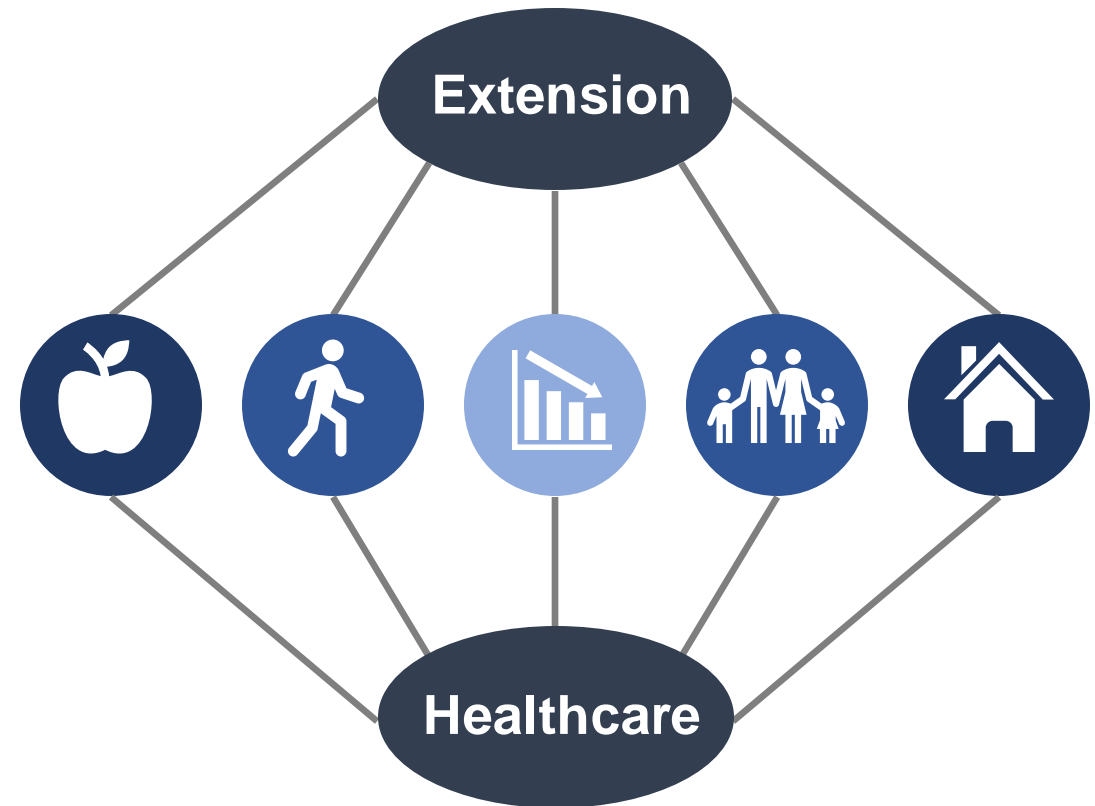
*“Extension can do for the nation’s health what it did for American agriculture.”*

## Cooperative Extension National Framework for Health Equity and Wellbeing, 2021

- Aligns partners with Extension priorities and outcomes within socio-ecological model
- Healthy & Safe Choices
- Healthy & Safe Environments

## Development of Partnerships with Public Health and Healthcare Agencies

- Increased recognition of Extension as vital partner by healthcare professionals
- Increase integration of programming with healthcare on relevant, overlapping areas of interest





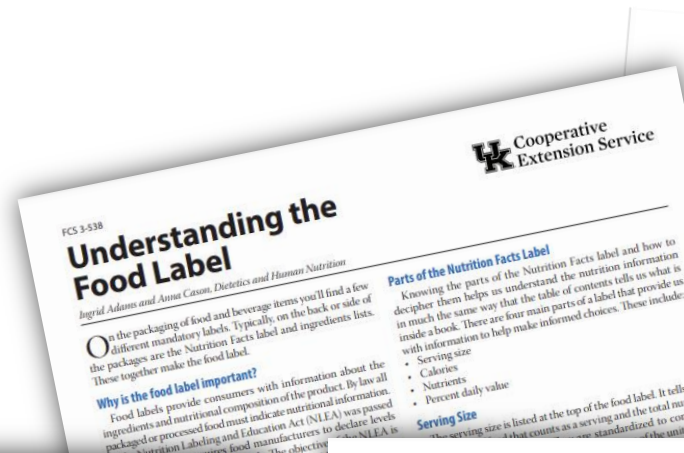


Extension provides food and nutrition focused evidence-based programming in the community and at the Extension Office.



# Food and Nutrition Resources

- Recipes
- Fact Sheets
- Podcasts



# Food and Nutrition Workshops

- Lessons
- Activities
- Handouts and fact sheets



MAKING THE MOST OF  
**MEALS**  
WHILE TRAVELING



Building  
a Better  
*Smoothie*



*Savvy Online*  
**Grocery Shopping**

# Food and Nutrition Programs

- Multiple lessons
- Strive toward positive behavior change



Cook Together  
Eat Together



# How to Connect with Cooperative Extension

## Contact your local Cooperative Extension Office

- Search online or through [www.extension.ca.uky.edu](http://www.extension.ca.uky.edu) to find the county directory
- Call or email your County FCS Agent

## Reach out to us and we can make connections for you

- Some counties have a vacancy in the FCS Agent position
- If you can't find your FCS agent, I can make an introduction for you.
- [annamcason@uky.edu](mailto:annamcason@uky.edu)

